

**PA
CE**

» exchange «

by

**PA
CE**

a new theatre for children, young
people and families in Paisley

can you help
inspire a new
generation?

exchangetheatre.org

**FUTURE
PAISLEY**

» support brochure «

PACE is a registered charity, founded in 1988 to empower and develop children and young people through creativity.

It runs the largest youth theatre in the UK.
Former members include James McAvoy,
Richard Madden, Paulo Nutini, James McArdle,
Amy Conachan, Scott Reid and many more.

"seemingly single-handedly producing the next
generation of Scottish acting talent"

Anna Burnside, Daily Record



PACE Youth Theatre performing 'Dungeness'
at the National Theatre, London (2018)
Photo credit: Richard Davenport



Scotland's first theatre dedicated to promoting and developing theatre for children, young people and families.

Inspired by young people focused venues in England including Theatre Hullabaloo in Darlington, Unicorn Theatre, Polka Theatre, Half Moon Theatre, Chickenshed, and Greenwich Young People's Theatre in London and Contact in Manchester.

Actor James McArdle with
members of PACE Youth Theatre
in the new building
Photo: James Chapelard



» why are we doing this?

**More young people in theatres: watching, participating, creating,
learning, volunteering, working and leading**

To help transform social, educational & personal outcomes for
many more young people using culture and creativity

To promote Paisley as a major hub for children and young people's
theatre, with a reputation as a vibrant cultural destination

To help regenerate the area with a powerful community resource



The arts have the power to change and shape young people's lives

Young people from low-income families who take part in arts activities are three times more likely to get a degree.



Research has shown attending theatre performances can improve social bonding, raise aspirations, help children develop emotional intelligence, think imaginatively and give children the skills, curiosity and creativity they need to understand the complex world we live in.

Participation in arts activities develops confidence, teamwork, communication skills, self-discipline, empathy and self-esteem; it broadens horizons and provides a safe space for young people to explore issues and take risks. Participants do better in school, are healthier, and are more likely to gain employment, volunteer and vote.

One in three children has never been to the theatre.

"Theatregoing is a habit. Instilled in children early, it can last a lifetime. The same goes for not going. When we talk about barriers to access, this is a part of what we mean: reasons that people habitually stay away. One is that they just never went."

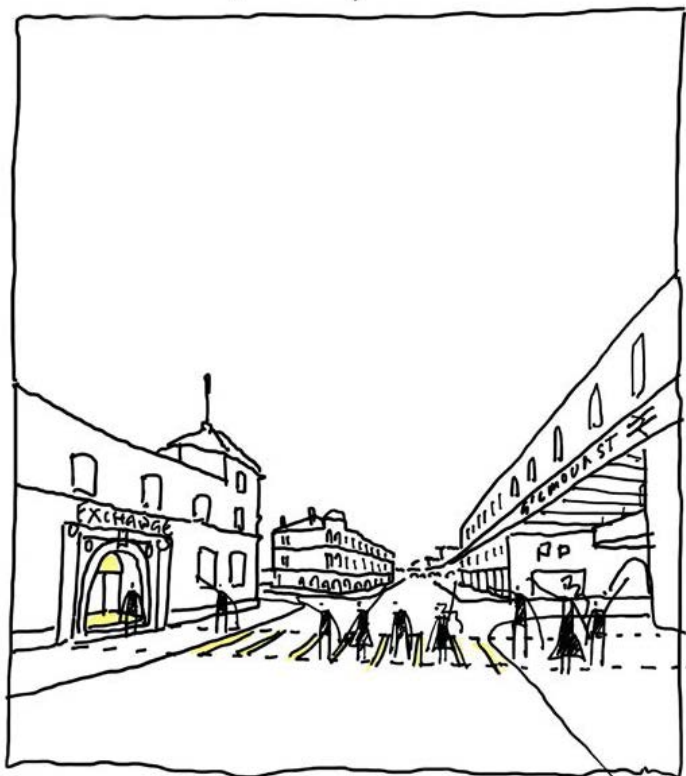
Matt Trueman, *What's On Stage*

"Theatre... gives our children the skills and the creativity necessary to face the world, to understand it and perhaps to change it too."

Lyn Gardner, *The Guardian*



» EXCHANGE THEATRE .



BY PACE. «

Exchange is in an ideal location to attract families from all over Scotland to Paisley. Just across the road from Gilmour Street train station, a 10 minute trip from the centre of Glasgow. Bringing 80,000+ visitors each year and boosting day & night-time economies.

renfrewshire: the home of young people's theatre

Renfrewshire has the highest number of young weekly participants in participatory drama and theatre activities in Scotland, more than Glasgow or Edinburgh, accounting for 10% of all youth theatre participation in Scotland. (Source: YTAS Sector Mapping Report, 2015).



place focused cultural regeneration

Exchange is situated in a postcode that's part of the 10% most deprived areas in Scotland according to the Scottish Index of Multiple Deprivation.



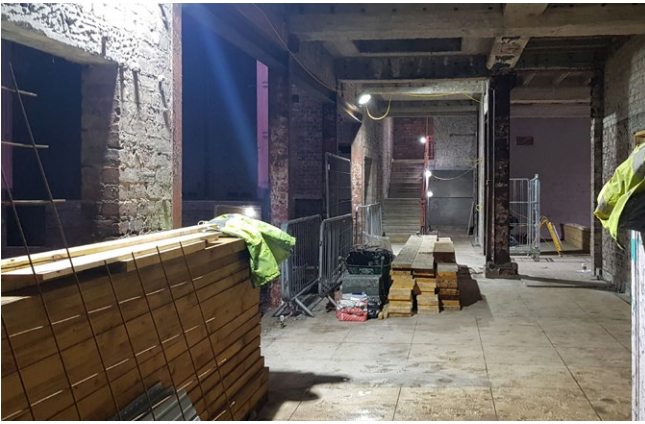
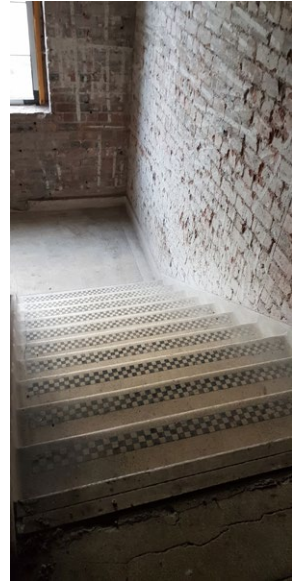
A venue for community performances and workshops, a space to ignite the imaginations of our youngest, a creative hub for emerging artists, a sector-leading venue for theatre for young audiences, a safe space for young people to call their own, an inclusive and accessible place for everyone.

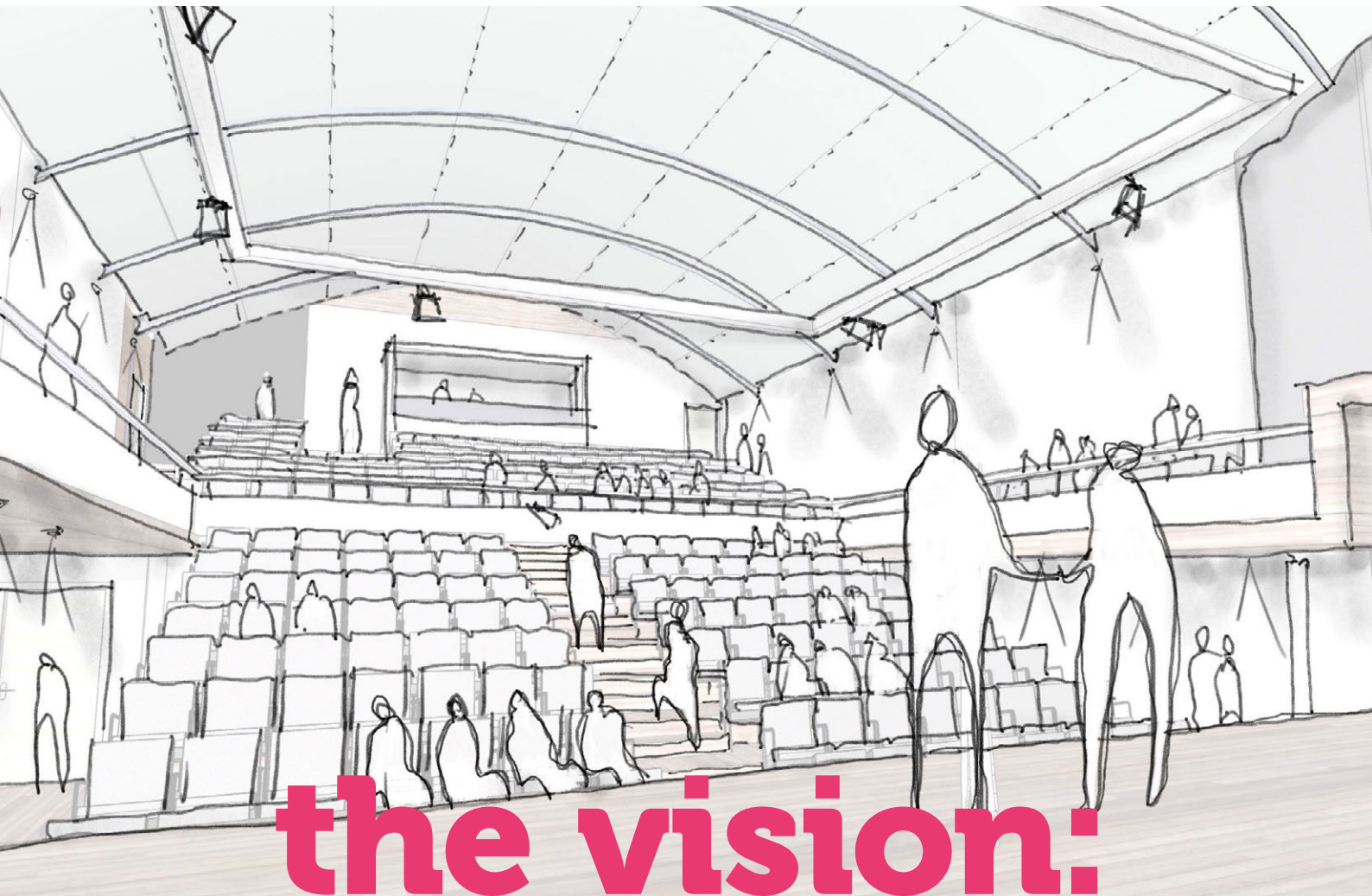


the building:

The site appears to be at the same approximate location of Paisley's first purpose-built theatre The Abercorn, built in 1882 by George Duckenfield. In 1884 it changed its name to the Royalty Theatre and in 1889 it was destroyed by fire.

The current building was constructed in 1932 as the New Templar Hall, designed by Andrew Hamilton and Henry Cook. Originally constructed as a dance and music hall, it has since been used as a telephone exchange, cinema, and most recently a night club (Ikon / Mannequins) which closed in 2004. It has lain empty since then but was removed from the Buildings at Risk register in 2013 after some restoration by the current owners.





the vision:

A new sustainable community theatre venue dedicated to producing, receiving and promoting access to theatre productions for young people and families, as well as involving young people aged 0-25 in performance and creative learning activities in a professional environment.

A mid-scale traditional 300+ seat main proscenium arch dedicated theatre, a small scale 80-100 seat flexible studio theatre / creative learning space and a community creative play and workshop space. The spaces will be complemented by a family friendly café/bar facility with informal performance area and exhibition space for young visual artists. The space will be fully accessible, autism friendly, and co-designed and developed at every stage with a group of 'young architects'.



» I am a child of Paisley - my mother was an enthusiastic member of the amateur dramatic society in the 1930s - and I can't think of any theatrical cause more vital, more worthy and more exciting than the building of a new theatre by PACE.



Send money and wish it godspeed. «

Sir David Hare, Playwright

» Any town or city needs culture at the heart of it in order to flourish and grow. This is a magical space with such a rich history and when you walk in it's quite astounding. It's a buzzin' opportunity that's really exciting and needs all the support it can get. «



Scott Reid
Actor (Still Game, White House Farm)

» I felt like I had a voice and was listened to at PACE. It's still the happiest time of my life. I have experienced first-hand that theatre has the power to be life-changing and it's clear that through this building PACE will be able to create even more opportunities for young people and their families. «



James McArdle
Actor (Ammonite, Mary Queen of Scots)

» PACE's ambitious plans will create an important gathering place in the heart of Paisley. A place for young people, for artists, and for creativity. A place of tremendous possibilities, at a time when it is more critical than ever that young people have a voice and creative home. «



Leonie Bell,
Director V&A Dundee

» An inspirational project for the young people of Paisley and beyond - it looks amazing!!! A new children's theatre for Scotland is on it's way but they need your help! Please spread the word and support if you can! «



Sita Pieracinni, Theatre-maker

» What PACE are doing perfectly complements the council's own investment in Paisley's cultural venues... which will drive new footfall into the heart of the town and build on the work already done to make us one of Scotland's key destinations. «



Cllr Iain Nicolson,
Leader, Renfrewshire Council



a place for
young people

dedicated to empowering young people with creativity and inspiring future generations

a place for
imagination

free multi-sensory creative play space for 0-9 with changing art installations designed to ignite imaginations

a place to help
regeneration

boosting the local economy by increasing visitors to Renfrewshire by over 80,000

a place for
education

curriculum complementary productions and workshops for schools, plus further education opportunities

a place for
renfrewshire

a much needed mid-sized venue for Renfrewshire, that establishes it across Scotland as a destination for children and young people's theatre

a place for
creative learning

expanded programme of participation for ages 0-25 of all backgrounds and abilities

a place for
young artists

home to a rep company of young artists aged 18-25 plus free space and mentoring for young emerging artists

a place for
the community

low cost venue for community performances, rehearsals and classes

a place for
theatre

a sector-leading venue for children's theatre in Scotland; producing, receiving and promoting theatre for and by young people

a place for
everyone

fully accessible, autism and ASN friendly building with the facilities to host new ASN youth theatre classes



a place that's
sustainable

The first and most important priority for our team of 'young creators' involved with Exchange has been environmental sustainability. So we are committed to doing everything we can to make Exchange a carbon neutral theatre for the future from inception, including 100% LED theatre lighting, a commitment to only sourcing energy from 100% green suppliers, an ethical food, drink and waste policy, and to pursue funding for our own green energy sources, such as solar panels.

A green theatre for the future that's financially and environmentally sustainable.

"With sustainability and looking after our planet at the forefront of all young people's minds, it is only fitting it's at the forefront of Exchange as well."

Kathleen, 17

» founding partner



ways you can help

We can offer opportunities for businesses or individuals to align themselves with a space dedicated to inspiring future generations.

Register interest at **www.pacetheatre.com/exchange/corporate-support**, drop us an email or give us a call.

We are looking to work with a very limited number of FOUNDING PARTNERS who wish to be substantially aligned with the project.

You will receive:

- Prominent acknowledgement as a founding partner on all of our press and marketing materials, website and social media during construction and for 3 years afterwards
- Mutually agreed key company messages in our foyer/cafe space once complete
- Private use of our auditorium once per year for 3 years once complete, or private performance of our panto or other PACE production for approx 300 staff or guests
- Meet CSR objectives by supporting our work with schools, young people and community groups
- All Founding Sponsor benefits

We are committed to building high profile corporate partnerships with a commitment to delivering clear business objectives for our partners, and can tailor our packages accordingly. (From £50,000+VAT.)

For further information call our Chief Executive Grant Mason on 0345 130 5218 or email grant@pacetheatre.co.uk

» founding sponsor

We are looking for 10 FOUNDING SPONSORS to pledge £10,000 each.

As a thank you for your support, you will be:

- Recognised a founder sponsor for life on a specially engraved plaque in the foyer and our website
- Given regular updates on major milestones as our plans progress
- Invited on a VIP behind-the-scenes tour of our construction site
- Invited to our building opening events as well to press and gala nights for productions and events in the future, including cast meets and backstage tours
- 20 complimentary tickets a year for 3 years after completion for exchange productions, including panto
- Companies will also receive a page in our programme for your company's use for all our major productions, including panto.

A unique opportunity to be forever associated with the creation of Exchange.

» founding supporter

We are looking for 50 FOUNDING SUPPORTERS to pledge £2,000 each.

As a thank you for your support, you will be:

- Recognised a founder sponsor for life on a specially engraved plaque in the foyer and our website
- Given regular updates on major milestones as our plans progress
- 4 complimentary tickets a year for 3 years after completion for exchange productions, including panto

» get in touch

call us on 0345 130 5218
or e-mail exchange@pacetheatre.co.uk

million pound wall

supporters



Be a part of the creation of Exchange by securing a block on our supporter's wall for you, a loved one or a business.

The supporter's wall will form a prominent part of the building, once complete, and until then will be created digitally.

View our digital supporters wall at www.pacetheatre.com/exchange/millionpoundwall

» single block

- A 5cm x 1.5cm block with your name or a dedication of your choice on our supporters wall in Exchange, once construction is complete.
- A small entry on our digital supporter's wall displaying your name or dedication.

As thanks for a £50 donation.

» gold block

- A larger, more prominent yellow gold 5cm x 2.5cm block with your name or a dedication of your choice on our supporters wall in Exchange, once construction is complete.
- A larger, yellow gold entry on our digital supporter's wall displaying your name or dedication.

As thanks for a £100 donation.

perfect for
businesses!

» logo block

- A 5cm x 5cm block with your name or a dedication of your choice on our supporters wall in Exchange, once construction is complete, which includes your group or company logo.
- A larger entry with logo on our digital supporter's wall displaying your name or dedication – starting today.

As thanks for a £200 donation.

» logo block (with web link)

- A 5cm x 7cm gold outlined block with your name or a dedication of your choice on our supporters wall in Exchange, once construction is complete, which includes your group or company logo.
- A larger entry with logo on our digital supporter's wall displaying your name or dedication – starting today!
- Additional text to describe your company or its products or services.
- **Click through link** on your block to your website on digital wall and website printed on building wall

As thanks for a £300 donation



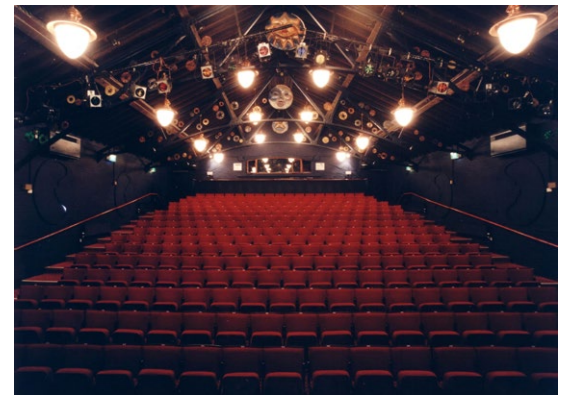
- A plaque engraved with your name or a dedication of your choice will be fixed to a seat of your choice, once construction is complete. Seat sponsorship will last at least 15 years.
 - You will also receive a sponsorship certificate.
 - You will also be listed in a special gold block on our supporters wall.
- You can sponsor a seat in our main auditorium for a £500 donation.

» book your block now at
www.pacetheatre.com/exchange/donate

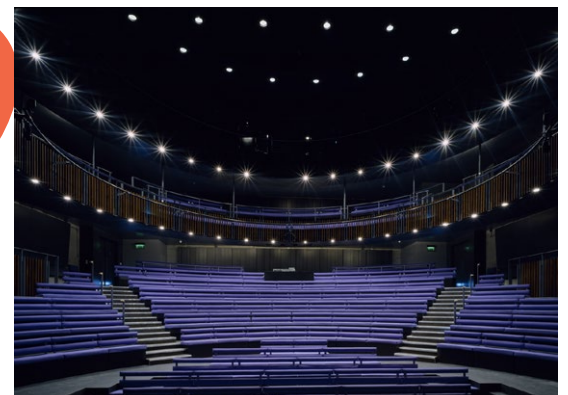
» case studies

These theatre venues for young audiences across England have played a crucial role in revitalising and regenerating town and city centres, improving community cohesion, improving young peoples lives and aspirations, developing audiences of the future, stimulating local economies by creating jobs, increasing visitors, regenerating vacant sites as well as improving the perception of an area.

Help us bring these benefits to Scotland with it's first dedicated community theatre venue for young people.



» Polka Theatre, Wimbledon



» Unicorn Theatre, London



» Theatre Hullabaloo, Darlington



» Contact, Manchester



» Pegasus Theatre, Oxford



» Half Moon Theatre, London



» Chickenshed, Southgate



» The Egg, Bath



pacetheatre.com

get in touch

call 0345 130 5218

e-mail exchange@pacetheatre.co.uk